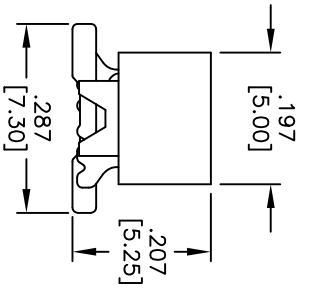
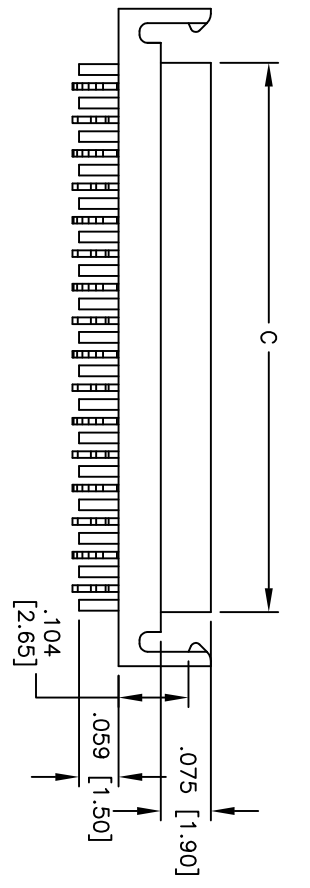
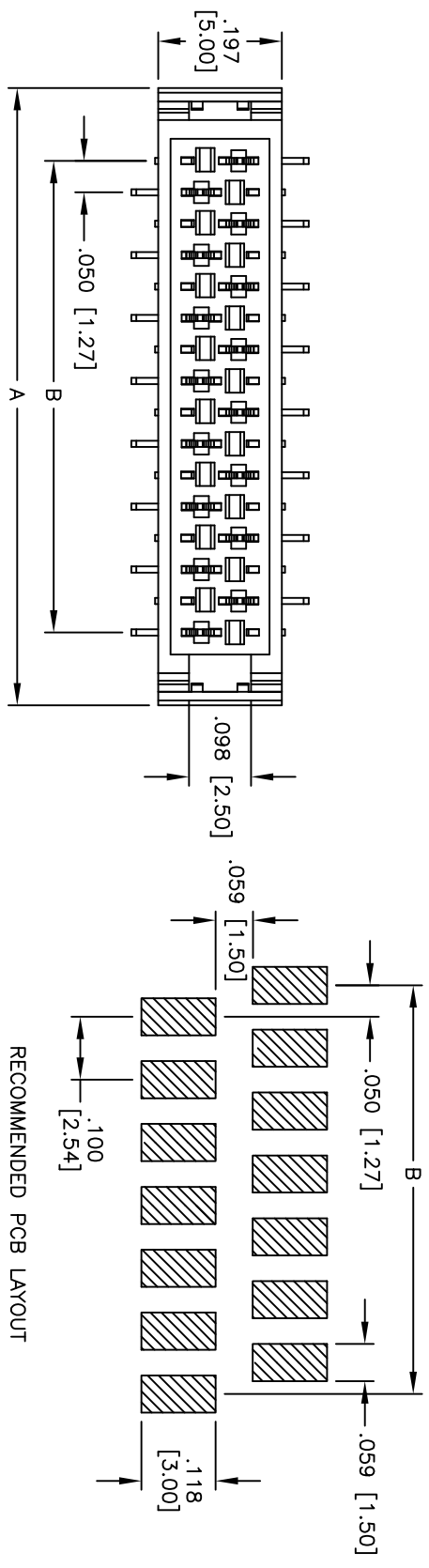


Rev	AWO #	Description	Date	Appr
-		RELEASED	3/17/09	

APPROVED: _____
 DATE: _____ TITLE: _____



PACKAGED ON TAPE & REEL

Positions: 2 thru 40 per row
 A = .050 [1.27] x No. of Positions + .182 [4.62]
 B = .050 [1.27] x No. of Spoces
 C = .050 [1.27] x No. of Positions + .020 [0.52]

ADAM TECH

909 Rahway Avenue, Union, NJ 07083
 Phone: 908-687-5000 Fax: 908-687-5710

TIN PLATED
 .050 [1.27] MINI FLEX FEMALE, SMT TYPE

SPECIFICATIONS:

- Material: Insulator: Hi-temp thermoplastic, rated UL 94V-0
- Insulator color: Black
- Contacts: Phosphor Bronze
- Plating: Tin over Copper underplate overall
- Electrical: Voltage rating: 30V AC/DC
- Current rating: 1A AC/DC
- Contact resistance: 20 mohms max.
- Insulation resistance: 1,000 Mohms min.
- Dielectric withstanding: 500V AC for 1 minute
- Temperature Rating: Operating temperature: -40°C to +105°C
- Environmental: Lead free, RoHS compliant
- Recommended soldering temp: 260°C for 5 seconds



UNLESS OTHERWISE SPECIFIED ALL DIMENSIONS ARE INCHES [MM]	
TOLERANCES: EXCEPT AS NOTED	
INCHES	HOLDS
.X ± .10	ØXX ± .10
.XX ± .020	ØXXX ± .015
.XXX ± .015	ØXXXX ± .010
APPROVALS	DATE
DRAWN	DY
CHECKED	
APPROVED	

TITLE		PART NO.	
.050 [1.27] MINI FLEX FEMALE, SMT TYPE		MPF-XX-SMT-T-T/R	
TIN PLATED		SCALE: NTS	SHEET 1 OF 1
REV.	REF:	S00068T	